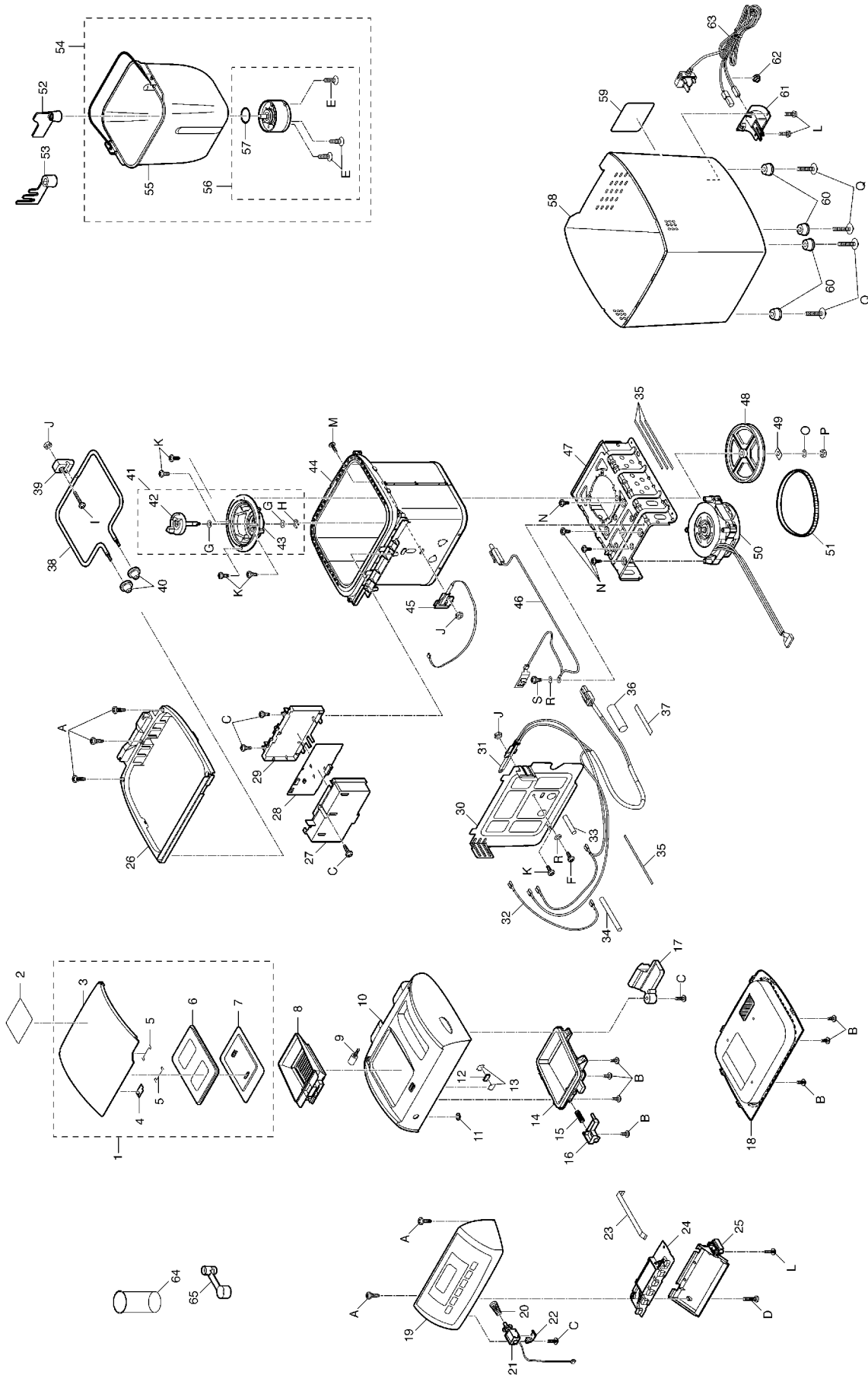


9 Exploded View and Replacement Parts List

9.1. Parts location



9.2. Replacement parts list

Ref. No.	Part No.	Part Name & Description	Remarks
1	ADA39E147-W	Dispenser cover assy	
2	ADY02E1421-W	Caution label	
3	ADD04E147-W	Dispenser cover	
4	ADD37E142	Magnet Plate B	
5	ADD35-143	Fixing Spring	
6	ADD34-145-H	Seal rubber	
7	ADD30-145-H	Middle Lid	
8	ADA44-145-H	Dispenser B assy	
9	ADJ15A1071	Hinge screw	
10	ADD01E147-W0	Top Lid	
11	ADJ30E142	Washer A	
12	ADD38E142	Magnet	
13	ADD36E142	Magnet plate A	
14	ADD29-145-H	Lid cover	
15	ADG02-143	Spring B	
16	ADD41-145-H	Lid lever B	
17	ADD05E147-H	Steam vent	
18	ADD02E147	Inner lid	
19	ADB97E147-WS	Control panel unit	
20	ASD850-108-W	Spring A	
21	ADA40E147-W	Solenoid assy B	△
22	ADQ07-1431	Solenoid fixing Plate	
23	ADP10E147	Flat cable	△
24	ADR30E147	P.C.Board A assy	△
25	ADT03E147	P.C.B.cover	
26	ADB03E147-W	Upper frame	
27	ADT11-145	P.C.B.holder lid	
28	ADR31E147	P.C.Board B assy	△
29	ADT01-145	P.C.B.holder	
30	ADE03E147	Heat insulator	
31	ADA17E147	Thermal fuse assy	△
32	ADP97-143	Lead wire B unit	△
33	ADP23E147	Non-flammable tube A	
34	ADP25-145	Non-flammable tube C	
35	ADP50-143-1201	Bind wire A	
36	ADP24-145	Non-flammable tube B	
37	AST-HG-T	Glass tape	
38	ADA22E147	Heater	△
39	ADE09-143	Heater insulater A	
40	ASD452-108CK	Heater insulater B	
41	ADA25-137	Heater case base assy	
42	ADE97A107	Connector lower unit	
43	ADE98-137	Heater case base unit	
44	ADE96-145-H	Heater case unit	
45	ADA11-145	Sensor assy	△
46	ADA30E147	Ground wire A assy	
47	ADE01-145	Angle	
48	ADF05R140	Pully B	
49	ASD867-100AW	Lock washer	
50	ADA10E147	Motor assy	△
51	ADF01R1401	Belt	
52	ADD96A1052	Kneading blade B unit	
53	ADD97G1321	Kneading blade A unit	
54	ADA12R1321	Bread pan assy	
55	ADA12R132-0S	Bread pan	
56	ADA29A115	Mounting shaft assy	
57	ASD191U103-K	Packing	
58	ADB01-145-W	Body	
59	ADY01E147	Rating plate	
60	ADB09-143-H	Rubber leg	
61	ADP07-145-W	Cord support	
62	ADP02R129	Cord bushing	
63	ADA24E1421	Power cord assy	△
64	ASD917-108-K	Measuring cup	
65	ASD911U112BK	Measuring spoon	

Ref. No.	Part No.	Part Name & Description	Remarks
A	XTB4+14BFC	4x14 Binding head tapping screw	
B	XTT4+10BFC	4x10 Truss head tapping screw	
C	XTB4+14BFJ	4x14 Binding head tapping screw	
D	XTB4+22BFJ	4x22 Binding head taptite screw	
E	XSS4+8UM	4x8 Flush head machine screw	
F	XSN4+8FFJ	4x8 Pan head machine screw	
G	X28XL5000	Motor washer A	
H	XUE6FP	U-cripe	
I	XTT4+18HFN	4x18 Truss head taptite screw	
J	XNG4BFJ	Hexagon nut	
K	DJ17A1151	4x10 Screw P	
L	XTB4+10BFJ	4x10 Binding head taptite screw	
M	XTT4+8FFN	4x8 Truss head taptite screw	
N	SD938-101AD	5x10 Screw R	
O	XWG5E10FJ	Round plain washer	
P	SD873-100AZ	Hexagon nut (special)	
Q	DJ14-145	4x20 Truss head C tite and washer assemblies screw	
R	XWA4BFJ	Spring washer	
S	XTN4+10FFJ	4x10 Pan head taptite screw	

Ref. No.	Part No.	Part Name & Description	Remarks
	ADZ01E147	Carton	
	ADZ02-145	Upper cushion	
	ADZ03-145	Lower cushion	
	ADZ50E147	Operation insturaction	
	ADZ63E142	Operation insturaction C	
	ADZ04-145	Protection sheet	
	ASD749-100	Lid protection sheet	
	ADZ06E147	Protection board	
	ADZ07E147	Pad	