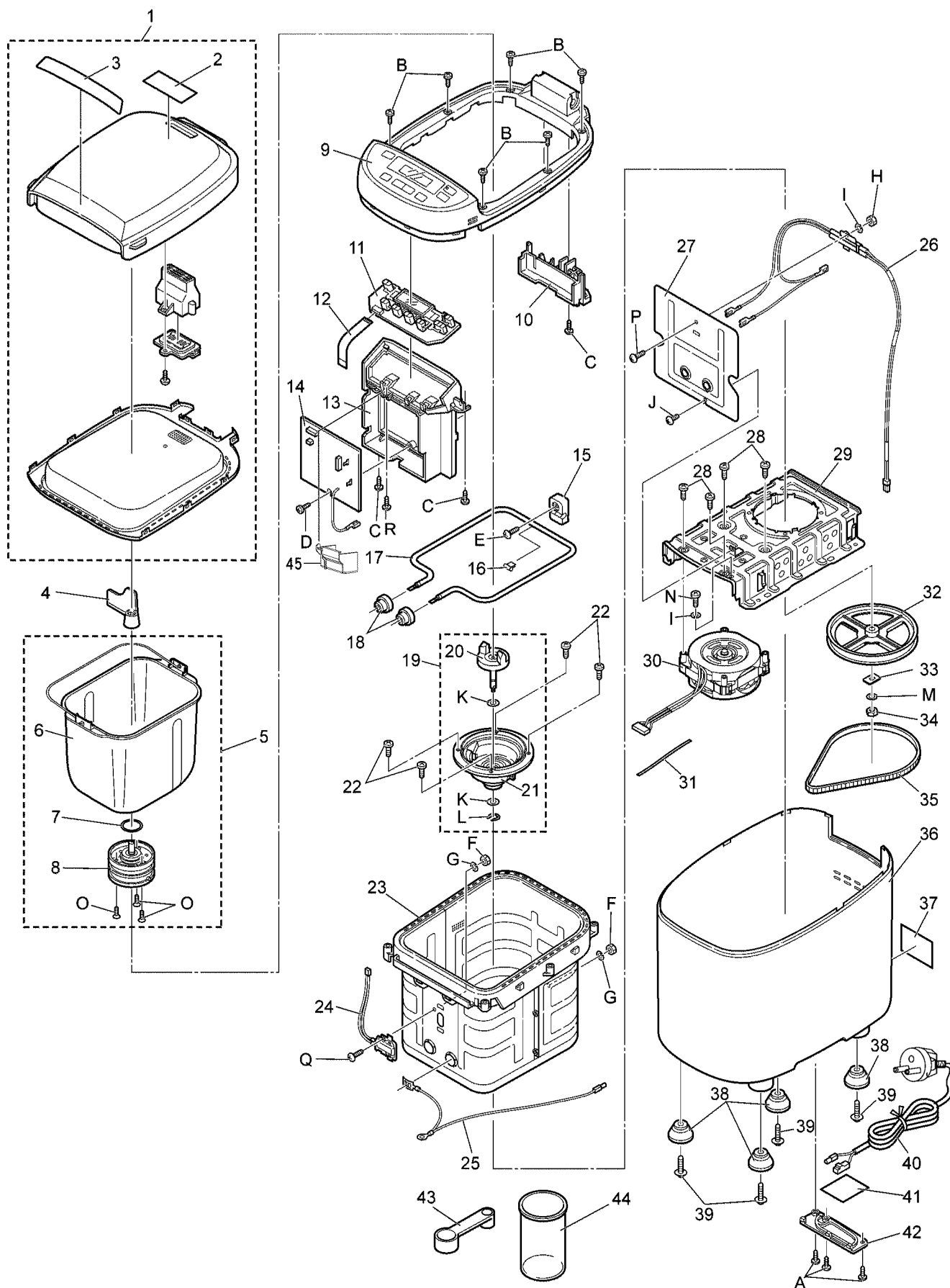


8 Exploded View and Replacement Parts List

8.1. PARTS LOCATION



8.2. REPLACEMENT PARTS LIST

Notes:Important safety notice

- Components identified by mark have special characteristics important for safety.
- " When replacing any of these components use only manufacturer's specified parts."

MODEL No.SD-2510WTS

| Safety | Ref. No. | Part No. | Part Name & Description | Pcs/Set | Remarks |
|----------------------------------|----------|--------------|-------------------------|---------|--|
| | | | | WTS | |
| <PARTS LIST> | | | | | |
| | 1 | ADA08K189-W0 | Dispenser cover assy | 1 | |
| △ | 2 | ADY02C166-W0 | Caution label | 1 | |
| | 3 | ADY06K189-W0 | Menu label | 1 | |
| | 4 | ADD96E160 | Kneading blade B unit | 1 | |
| | 5 | ADA12E165 | Bread pan assy | 1 | |
| | 6 | ADD84E165 | Bread pan | 1 | |
| | 7 | ASD191U103-K | Packing | 1 | |
| | 8 | ADA29E165 | Mounting shaft assy | 1 | |
| | 9 | ADB96K189W0S | Upper frame | 1 | |
| | 10 | ADB16K187-W0 | Hinge cover | 1 | |
| △ | 11 | ADR30K189 | P.C.Board A assy | 1 | |
| △ | 12 | ADP10K189 | Flat cable | 1 | |
| | 13 | ADT01E165 | Base for P.C.B. | 1 | |
| △ | 14 | ADR31E167 | P.C.Board B assy | 1 | |
| | 15 | ADE09-163 | Heater insulator A | 1 | |
| | 16 | ADE16-163 | Fixing Metal of heater | 1 | |
| △ | 17 | ADA22B165 | Heater | 1 | 230V-550W |
| | 18 | ADE10E165 | Heater insulator B | 2 | |
| | 19 | ADA25E165 | Heater case base assy | 1 | |
| | 20 | ADE97A107 | Connector lower unit | 1 | |
| | 21 | ADE98E165 | Heater case base unit | 1 | |
| | 22 | ADJ17A115 | Screw P | 4 | |
| △ | 23 | ADE96B165 | Heater case unit | 1 | W/No.15-18 |
| △ | 24 | ADA11E166 | Sensor assy | 1 | |
| △ | 25 | ADA30E166 | Ground wire A assy | 1 | |
| △ | 26 | ADA17K188 | Thermal fuse assy | 1 | Blowout temp. is 142 degrees of centi-grade. |
| | 27 | ADE03E166 | Heat insulator | 1 | |
| | 28 | ASD938-101AD | Screw R | 4 | |
| | 29 | ADE01E165 | Angle | 1 | |
| △ | 30 | ADA10B147 | Motor assy | 1 | W/TF |
| | 31 | ADP50-143 | Bind wire A | 2 | |
| | 32 | ADF05E165 | Pulley B | 1 | |
| | 33 | ASD867-100AW | Lock washer | 1 | |
| | 34 | ASD873-100BZ | Hexagon nut (special) | 1 | |
| | 35 | ADF01E165 | Belt | 1 | |
| | 36 | ADB01E167-W0 | Body | 1 | |
| △ | 37 | ADY01K189 | Rating plate | 1 | |
| | 38 | ADB09E1601H0 | Rubber leg | 4 | |
| | 39 | ADJ14E160 | Screw | 4 | |
| △ | 40 | ADA24K187 | Power cord assy | 1 | |
| △ | 41 | AJ-236-20 | Glass tape | 1 | |
| | 42 | ADP07K187-W0 | Cord support | 1 | |
| | 43 | ASD911U112P0 | Measuring spoon | 1 | |
| | 44 | ASD917-108-K | Measuring cup | 1 | |
| | 45 | ADT11K187 | P.C.B.Holder Cover | 1 | |
| <SMALL STANDARDIZED METAL PARTS> | | | | | |
| | A | XTB4H14BFJ | Screw | 3 | |
| | B | XTB4+14BFC | Screw | 6 | |
| | C | XTB4+14BFJ | Screw | 3 | |
| | D | XTB4+14BFJ | Screw | 1 | |
| | E | XTT4+17HFN | Screw | 1 | |
| | F | XNG4BFJ | Hexagon nut | 2 | |
| | G | XWA4BFJ | Spring washer | 2 | |
| | H | XNG4BFJ | Hexagon nut | 1 | |
| | I | XWA4BFJ | Spring washer | 2 | |
| | J | XTT4+8FFN | Screw | 1 | |
| | K | X28XL5000 | Motor washer A | 2 | |
| | L | XUE6FP | U-clip | 1 | |
| | M | XWG5E10FJ | Washer | 1 | |
| | N | XTN4+10FFJ | Screw | 1 | |
| | O | XSS4+8UW | Screw | 3 | |
| | P | XSN4+8FFJ | Screw | 1 | |

| Safety | Ref. No. | Part No. | Part Name & Description | Pcs/Set | Remarks |
|--------------------------|----------|-------------|-------------------------|---------|---------|
| | | | | WTS | |
| | Q | XTT4+8FFN | Screw | 1 | |
| | R | XTB4+16BFJK | Screw | 1 | |
| <PACKING SPECIFICATIONS> | | | | | |
| | | DZ01K189-W0 | Carton | 1 | |
| | | DZ02E167 | Upper cushion | 1 | |
| | | DZ03E166 | Lower cushion | 1 | |
| | | DZ50K189 | Operating instructions | 1 | |
| | | DZ06E165 | Protection board | 1 | |
| | | DZ05E166 | Lid protection sheet | 1 | |
| | | DZ51K167 | Warranty card | 1 | |